

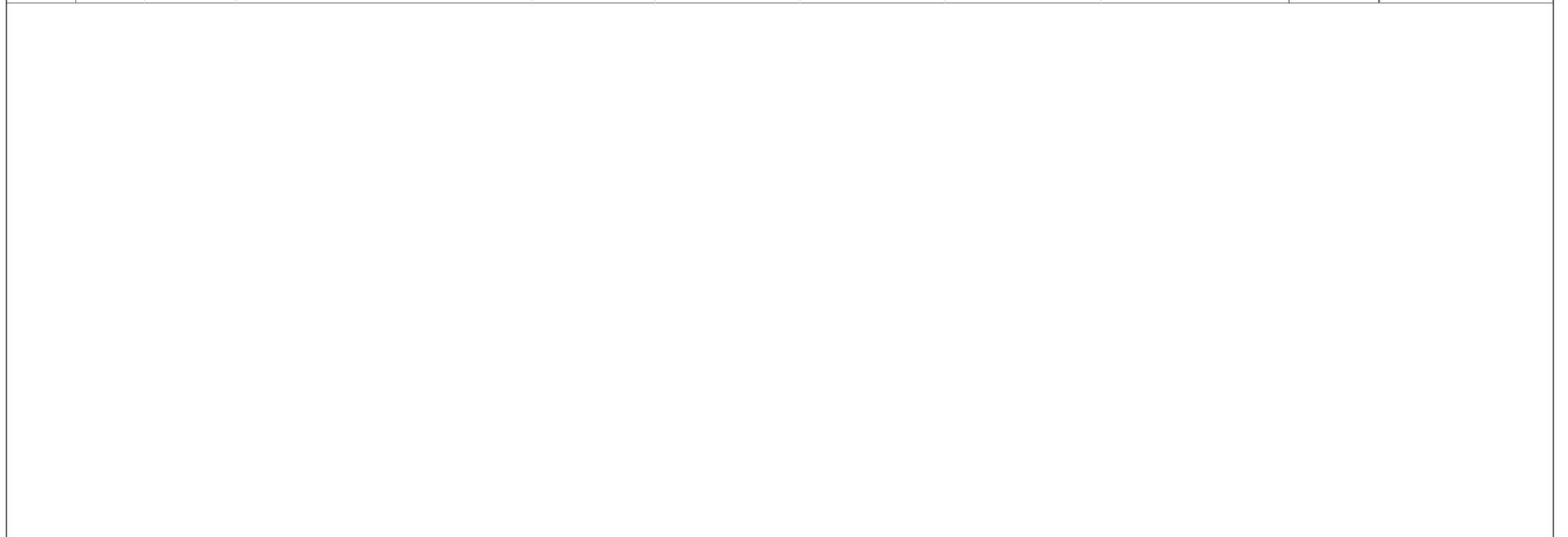
| ID | Task Mode | Task Name | Duration | Start | Finish | Predecessors | Resource Names | Apr '24 | | | | |
|----|-----------|-----------------------------------|----------------|--------------------|--------------------|--------------|----------------|---------|----|----|----|---|
| | | | | | | | | 10 | 17 | 24 | 31 | 7 |
| 1 | | 1900 Cambronne | 40 days | Mon 3/25/24 | Fri 5/17/24 | | | | | | | |
| 2 | | Sewer | 10 days | Mon 3/25/24 | Fri 4/5/24 | | Jeremy | | | | | |
| 3 | | Restoration | 20 days | Mon 4/22/24 | Fri 5/17/24 | 2 | C&M | | | | | |
| 4 | | 8300 Sycamore | 30 days | Wed 4/17/24 | Tue 5/28/24 | | | | | | | |
| 5 | | Sewer | 10 days | Wed 4/17/24 | Tue 4/30/24 | 2 | Jeremy | | | | | |
| 6 | | Restoration | 20 days | Wed 5/1/24 | Tue 5/28/24 | 5 | C&M | | | | | |
| 7 | | 8500 Panola | 39 days | Mon 5/6/24 | Thu 6/27/24 | | | | | | | |
| 8 | | Sewer | 10 days | Mon 5/6/24 | Fri 5/17/24 | 5 | Jeremy | | | | | |
| 9 | | Restoration | 20 days | Fri 5/31/24 | Thu 6/27/24 | 8 | C&M | | | | | |
| 10 | | 8500 Panola (Earhart Side) | 10 days | Mon 5/6/24 | Fri 5/17/24 | | | | | | | |
| 11 | | Sewer | 10 days | Mon 5/6/24 | Fri 5/17/24 | 8 | Jeremy | | | | | |
| 12 | | 8500 Spruce | 81 days | Fri 4/26/24 | Fri 8/16/24 | | | | | | | |
| 13 | | Sewer | 7 days | Fri 4/26/24 | Mon 5/6/24 | | Crew B | | | | | |
| 14 | | Restoration | 30 days | Mon 7/8/24 | Fri 8/16/24 | | C&M | | | | | |
| 15 | | Lining | 10 days | Mon 6/17/24 | Fri 6/28/24 | | BLD | | | | | |
| 16 | | 8300 Spruce | 65 days | Mon 5/20/24 | Fri 8/16/24 | | | | | | | |
| 17 | | Sewer | 8 days | Mon 5/20/24 | Wed 5/29/24 | 11 | Jeremy | | | | | |
| 18 | | Restoration | 30 days | Mon 7/8/24 | Fri 8/16/24 | 14SS | C&M | | | | | |
| 19 | | Lining | 10 days | Mon 6/17/24 | Fri 6/28/24 | 15SS | BLD | | | | | |
| 20 | | 2300 Dublin | 68 days | Wed 5/15/24 | Fri 8/16/24 | | | | | | | |
| 21 | | Sewer | 8 days | Wed 5/15/24 | Fri 5/24/24 | 13 | Crew B | | | | | |
| 22 | | Restoration | 30 days | Mon 7/8/24 | Fri 8/16/24 | 18SS | C&M | | | | | |
| 23 | | Lining | 10 days | Mon 6/17/24 | Fri 6/28/24 | 19SS | BLD | | | | | |
| 24 | | 2300 Dante | 57 days | Thu 5/30/24 | Fri 8/16/24 | | | | | | | |
| 25 | | Sewer | 7 days | Thu 5/30/24 | Fri 6/7/24 | 17 | Jeremy | | | | | |
| 26 | | Restoration | 30 days | Mon 7/8/24 | Fri 8/16/24 | 22SS | C&M | | | | | |

| | | | | | | |
|--|-----------------|--|--------------------|--|-----------------------|--|
| Project: SWB 30258 - Project Sche Date: Tue 5/14/24 | Task | | External Milestone | | Manual Summary Rollup | |
| | Split | | Inactive Task | | Manual Summary | |
| | Milestone | | Inactive Milestone | | Start-only | |
| | Summary | | Inactive Summary | | Finish-only | |
| | Project Summary | | Manual Task | | Deadline | |
| | External Tasks | | Duration-only | | Progress | |

| ID | Task Mode | Task Name | Duration | Start | Finish | Predecessors | Resource Names | Apr '24 | | | | |
|----|-----------|-----------------------|----------------|--------------------|--------------------|--------------|----------------|---------|----|----|----|---|
| | | | | | | | | 10 | 17 | 24 | 31 | 7 |
| 27 | | Lining | 10 days | Mon 6/17/24 | Fri 6/28/24 | 23SS | BLD | | | | | |
| 28 | | 8100 Spruce | 26 days | Mon 5/27/24 | Mon 7/1/24 | | | | | | | |
| 29 | | Sewer | 7 days | Mon 5/27/24 | Tue 6/4/24 | 21 | Crew B | | | | | |
| 30 | | Restoration | 10 days | Tue 6/18/24 | Mon 7/1/24 | | C&M | | | | | |
| 31 | | Lining | 10 days | Mon 6/17/24 | Fri 6/28/24 | 27SS | BLD | | | | | |
| 32 | | 8500 Sycamore | 89 days | Tue 5/14/24 | Fri 9/13/24 | | | | | | | |
| 33 | | Sewer | 4 days | Tue 5/14/24 | Fri 5/17/24 | 25 | Jeremy | | | | | |
| 34 | | Restoration | 20 days | Mon 8/19/24 | Fri 9/13/24 | | C&M | | | | | |
| 35 | | Lining | 10 days | Mon 7/15/24 | Fri 7/26/24 | | BLD | | | | | |
| 36 | | 8100 Panola | 38 days | Wed 6/5/24 | Fri 7/26/24 | | | | | | | |
| 37 | | Sewer | 8 days | Wed 6/5/24 | Fri 6/14/24 | 29 | Crew B | | | | | |
| 38 | | Restoration | 10 days | Tue 7/2/24 | Mon 7/15/24 | 30 | C&M | | | | | |
| 39 | | Lining | 10 days | Mon 7/15/24 | Fri 7/26/24 | 35SS | BLD | | | | | |
| 40 | | 2000 Cambronne | 66 days | Fri 6/14/24 | Fri 9/13/24 | | | | | | | |
| 41 | | Sewer | 4 days | Fri 6/14/24 | Wed 6/19/24 | 33 | Jeremy | | | | | |
| 42 | | Restoration | 20 days | Mon 8/19/24 | Fri 9/13/24 | 34SS | C&M | | | | | |
| 43 | | Lining | 10 days | Mon 7/15/24 | Fri 7/26/24 | 39SS | BLD | | | | | |
| 44 | | 2300 Cambronne | 65 days | Mon 6/17/24 | Fri 9/13/24 | | | | | | | |
| 45 | | Sewer | 5 days | Mon 6/17/24 | Fri 6/21/24 | 37 | Crew B | | | | | |
| 46 | | Restoration | 20 days | Mon 8/19/24 | Fri 9/13/24 | 42SS | C&M | | | | | |
| 47 | | Lining | 10 days | Mon 7/15/24 | Fri 7/26/24 | 43SS | BLD | | | | | |
| 48 | | 2200 Cambronne | 62 days | Thu 6/20/24 | Fri 9/13/24 | | | | | | | |
| 49 | | Sewer | 5 days | Thu 6/20/24 | Wed 6/26/24 | 41 | Jeremy | | | | | |
| 50 | | Restoration | 20 days | Mon 8/19/24 | Fri 9/13/24 | 46SS | C&M | | | | | |
| 51 | | Lining | 10 days | Mon 7/15/24 | Fri 7/26/24 | 47SS | BLD | | | | | |
| 52 | | 2200 Dante | 10 days | Mon 6/17/24 | Fri 6/28/24 | | | | | | | |

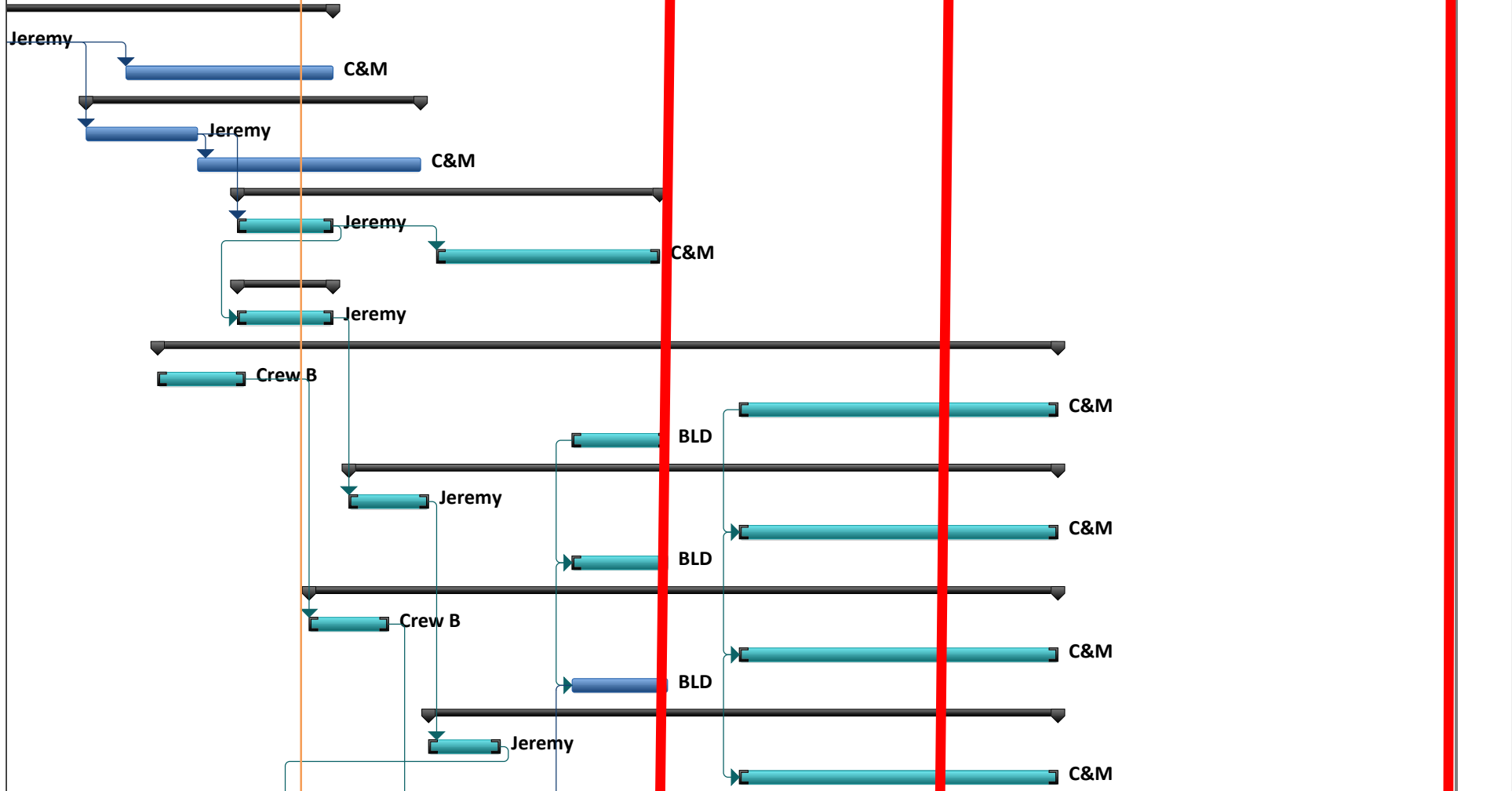
| | | | | | | |
|--|-----------------|--|--------------------|--|-----------------------|--|
| Project: SWB 30258 - Project Sche Date: Tue 5/14/24 | Task | | External Milestone | | Manual Summary Rollup | |
| | Split | | Inactive Task | | Manual Summary | |
| | Milestone | | Inactive Milestone | | Start-only | |
| | Summary | | Inactive Summary | | Finish-only | |
| | Project Summary | | Manual Task | | Deadline | |
| | External Tasks | | Duration-only | | Progress | |

| ID | Task Mode | Task Name | Duration | Start | Finish | Predecessors | Resource Names | Apr '24 | | | | |
|----|-----------|--------------------|----------------|--------------------|--------------------|--------------|----------------|---------|----|----|----|---|
| | | | | | | | | 10 | 17 | 24 | 31 | 7 |
| 53 | | Lining | 10 days | Mon 6/17/24 | Fri 6/28/24 | 55SS | | | | | | |
| 54 | | 8200 Neron | 10 days | Mon 6/17/24 | Fri 6/28/24 | | | | | | | |
| 55 | | Lining | 10 days | Mon 6/17/24 | Fri 6/28/24 | 31SS | | | | | | |
| 56 | | Consent Decree 25% | | Thu 6/27/24 | | | | | | | | |
| 57 | | Consent Decree 50% | | Thu 8/1/24 | | | | | | | | |
| 58 | | Consent Decree 75% | | Sat 10/5/24 | | | | | | | | |

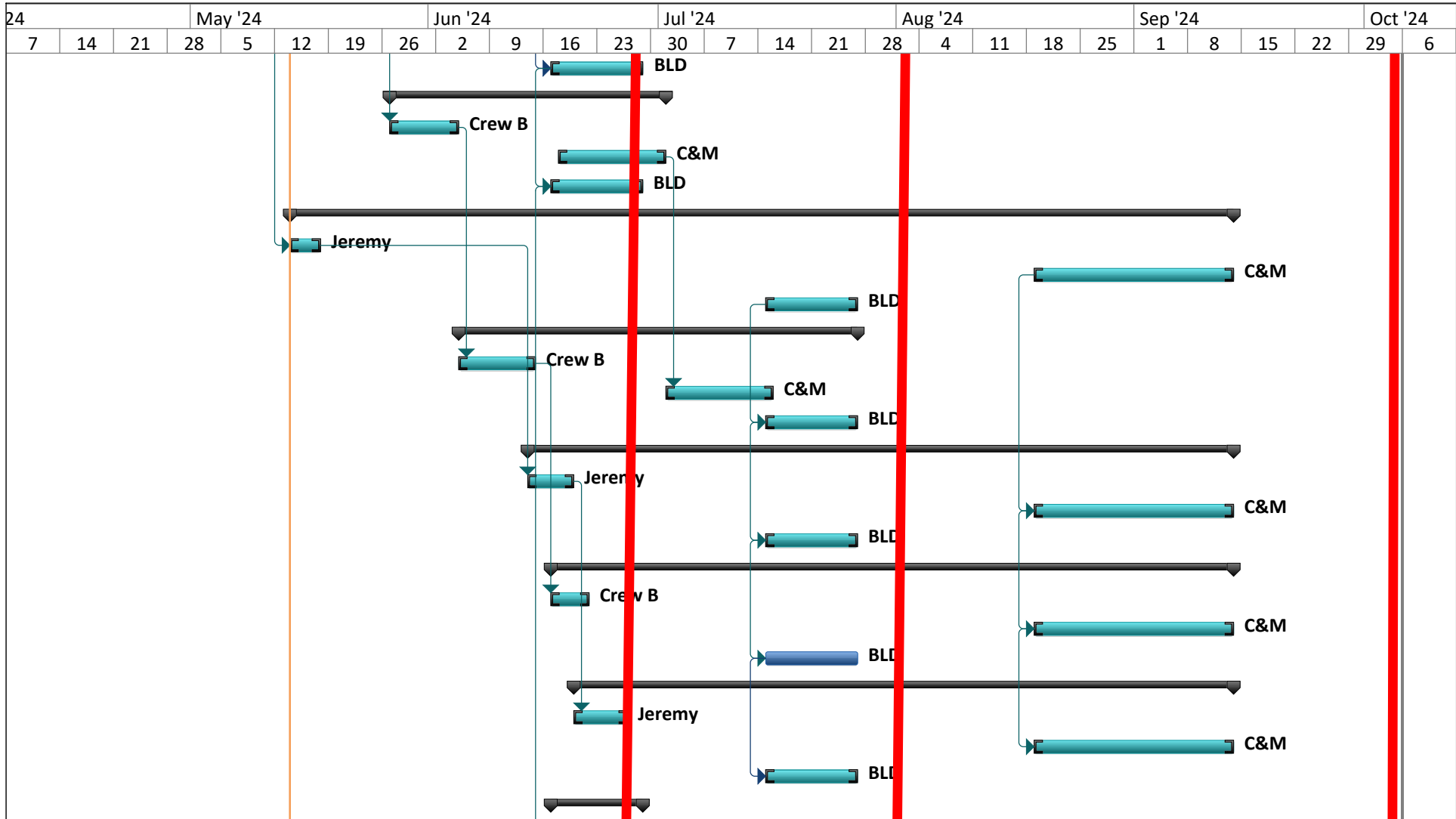


| | | | | | | |
|--|-----------------|--|--------------------|--|-----------------------|--|
| Project: SWB 30258 - Project Sche Date: Tue 5/14/24 | Task | | External Milestone | | Manual Summary Rollup | |
| | Split | | Inactive Task | | Manual Summary | |
| | Milestone | | Inactive Milestone | | Start-only | |
| | Summary | | Inactive Summary | | Finish-only | |
| | Project Summary | | Manual Task | | Deadline | |
| | External Tasks | | Duration-only | | Progress | |

24 May '24 Jun '24 Jul '24 Aug '24 Sep '24 Oct '24
 7 14 21 28 5 12 19 26 2 9 16 23 30 7 14 21 28 4 11 18 25 1 8 15 22 29 6

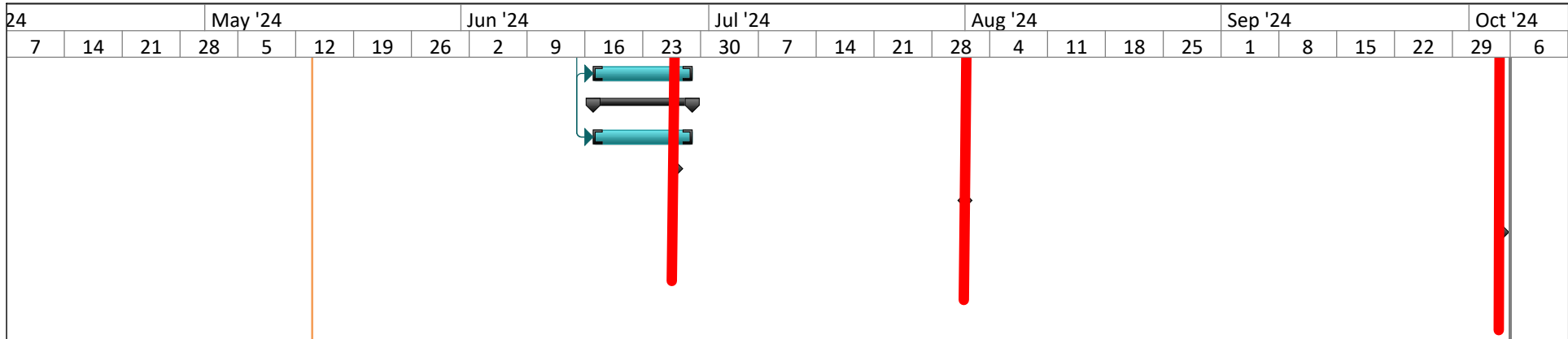


| | | | | | | |
|--|-----------------|--|--------------------|--|-----------------------|--|
| Project: SWB 30258 - Project Sche Date: Tue 5/14/24 | Task | | External Milestone | | Manual Summary Rollup | |
| | Split | | Inactive Task | | Manual Summary | |
| | Milestone | | Inactive Milestone | | Start-only | |
| | Summary | | Inactive Summary | | Finish-only | |
| | Project Summary | | Manual Task | | Deadline | |
| | External Tasks | | Duration-only | | Progress | |



Project: SWB 30258 - Project Sche
Date: Tue 5/14/24

| | | | | | |
|-----------------|--|--------------------|--|-----------------------|--|
| Task | | External Milestone | | Manual Summary Rollup | |
| Split | | Inactive Task | | Manual Summary | |
| Milestone | | Inactive Milestone | | Start-only | |
| Summary | | Inactive Summary | | Finish-only | |
| Project Summary | | Manual Task | | Deadline | |
| External Tasks | | Duration-only | | Progress | |



Project: SWB 30258 - Project Sche
Date: Tue 5/14/24

| | | | | | |
|-----------------|--|--------------------|--|-----------------------|--|
| Task | | External Milestone | | Manual Summary Rollup | |
| Split | | Inactive Task | | Manual Summary | |
| Milestone | | Inactive Milestone | | Start-only | |
| Summary | | Inactive Summary | | Finish-only | |
| Project Summary | | Manual Task | | Deadline | |
| External Tasks | | Duration-only | | Progress | |